

COMPREHENSIVE CANCER INFRASTRUCTURES 4 EUROPE



CCI4EU

Comprehensive Cancer
Infrastructures for Europe



What is a CCI?



The Mission Board of the EU Mission on Cancer has defined Comprehensive Cancer Infrastructures (CCI) as *‘national or regional infrastructures that provide resources and services to support, improve and integrate cancer care, research, training of care professionals and education for cancer patients, survivors and families/carers.’*

The Horizon Europe Mission on Cancer **will complement** the set-up of an **EU network of Comprehensive Cancer Centers** across Member States that will be established through the Europe’s Beating Cancer Plan by 2025. The Mission aims to achieve the target of ensuring that **90% of eligible cancer patients have access to Comprehensive Cancer Infrastructures by 2030**. In that context, and in full complementarity and synergy with the actions foreseen under the Europe’s Beating Cancer Plan, **this topic should set up capacity-building** for Member States and Associated Countries to support them in respectively **improving or developing their existing or future CCI,**

focussing on developing their research & innovation-related capacities.



Reminder of the key elements of the call text



COMPREHENSIVE
CANCER
INFRASTRUCTURE
FOR EUROPE

HORIZON-MISS-2022-CANCER-01-02: Strengthening research capacities of comprehensive cancer infrastructures

Closure: **07.09.2022**; Indicative call budget: EUR 10 M; Project size: EUR 10 M; **Coordination & Support Action**

Scope:

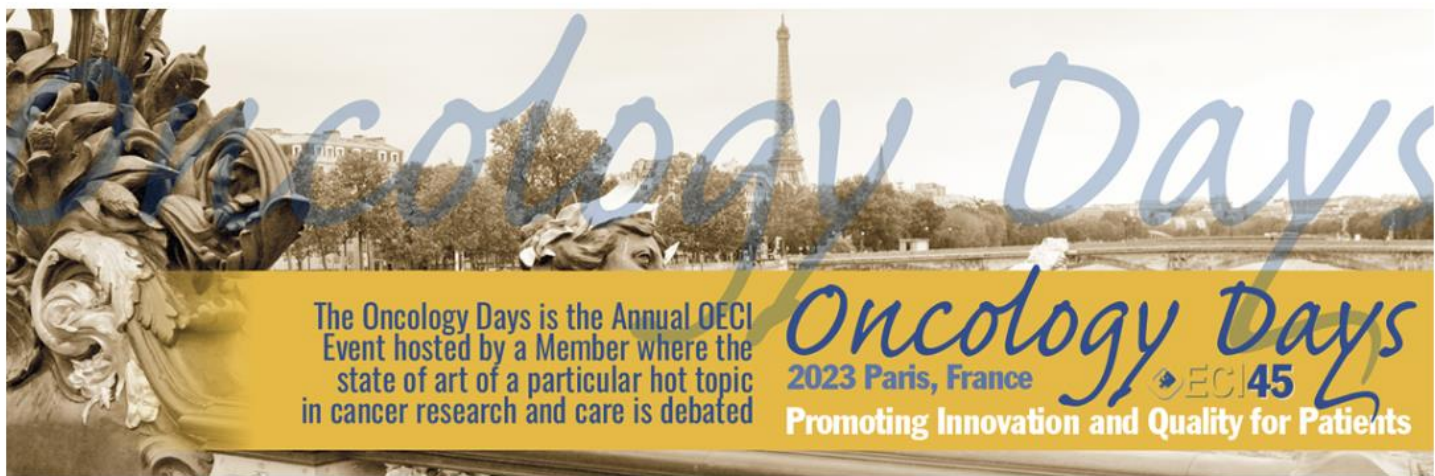
- Offer an R&I-centred **capacity-building programme** to support existing and future comprehensive cancer infrastructures.
- Cooperation with the EU network of comprehensive cancer centres CRANE, being established through Europe's Beating Cancer Plan. Participating countries will be provided with recommendations. Support and roadmap for implementation and transferable best practices will be identified.

Expected outcomes:

- Research and health policy makers will benefit from support to further develop or set up comprehensive cancer infrastructures, leading to improvement in *research and access to care*.
- Research and healthcare professionals will benefit from a **better integration between research and care**;
- Researchers will benefit from innovative infrastructures to perform research and participate in studies.
- Citizens, including patients and their caregivers will have access to screening, diagnostics and treatments, care pathways and integrated care. **Participation in clinical trials will be facilitated.**



The largest network of Cancer Centres and Institutes across Europe and beyond its borders



The Oncology Days is the Annual OECI Event hosted by a Member where the state of art of a particular hot topic in cancer research and care is debated

Oncology Days
2023 Paris, France
Promoting Innovation and Quality for Patients

The OECI Network



The **Accreditation and Designation Programme** is designed to help cancer Centres and Institutes implement a quality approach adopting the OECI standards under a peer review system

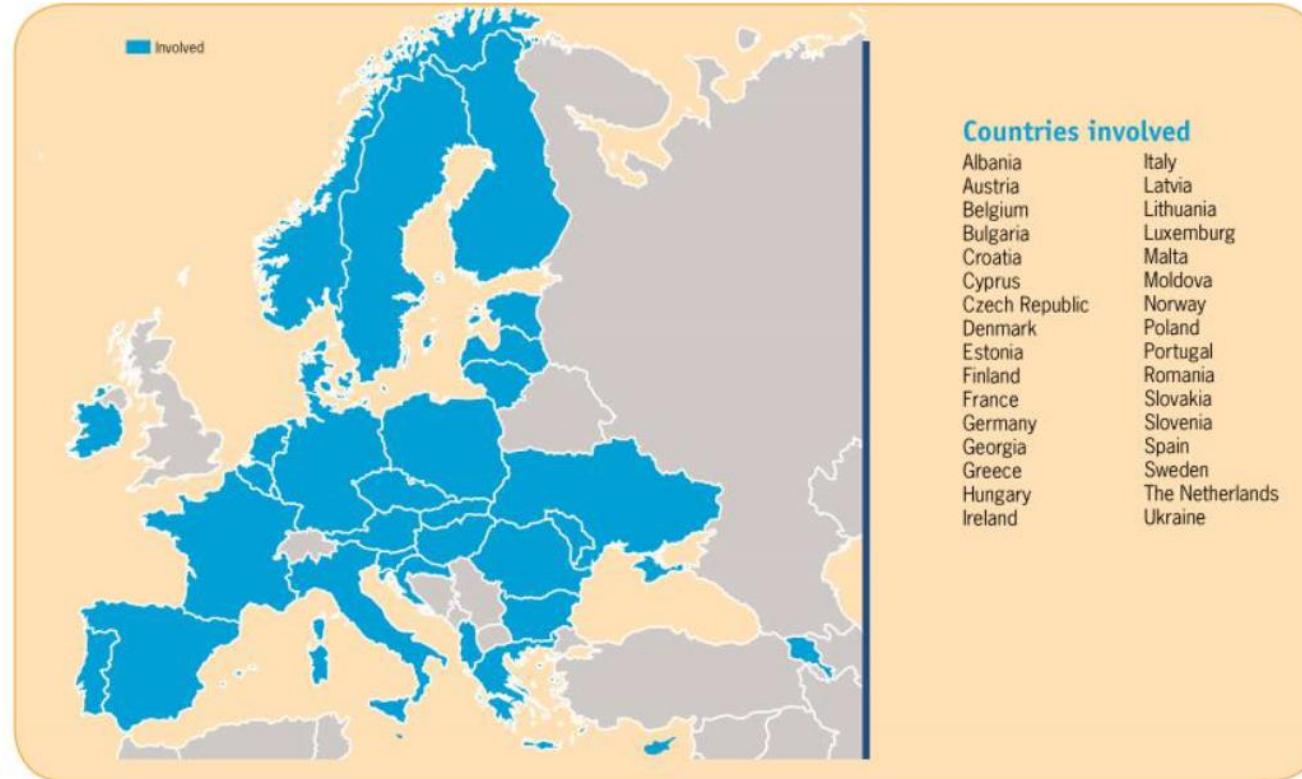
CCI4EU CONSORTIUM and LEADER



Programme

HORIZON-MISS-2022-CANCER-01(Research and Innovation actions supporting the implementation of the Mission on Cancer)

- Coordinator – OECD
- 55 partners from 27 Member States and 4 Associated Countries
- “EU Actions Forum” bringing together EU projects – UNCAN, CRANE, JANE, and ECHOS.
- Budget: €9,984,080



What is a CCI4EU?



CCI4EU solution: this Coordination and Support Action (CSA) will support Member States and Associated Countries in **improving or developing their existing or future CCC**, focussing on building their research **innovation and digital-related capacities** and their integration with cancer care.

Data already available confirm that the level of "Comprehensive Cancer Centre maturity" is different and needs better governance and integration

Capacity Building is a complex intervention that requires multiple actions delivered to policymakers, researchers, health professionals, citizens, patients, caregivers and private companies, capable of change and improvement in care and research, supported by a continuing education programme.

The CCI4EU tailored Capacity Building Programme objective that **90% of cancer patients are treated in Comprehensive Cancer Centres by 2030**. (Recommendation #13 of the Mission on Cancer)



What is a CCI4EU?



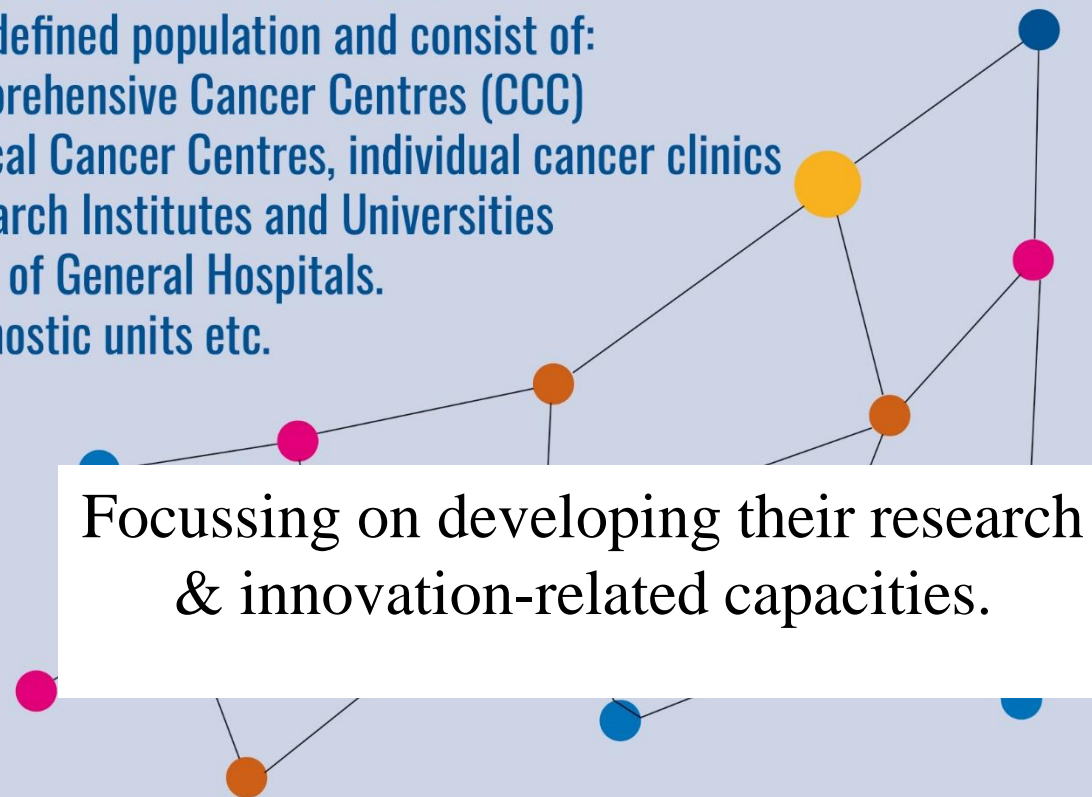
CCI A Comprehensive Cancer Infrastructure should also include public functions such as public health, screening, primary and community care, and population cancer registries. Other supporting infrastructures such as –omics and clinical trials platforms

CCN

Comprehensive Cancer Networks*

serve a defined population and consist of:

- Comprehensive Cancer Centres (CCC)
- Clinical Cancer Centres, individual cancer clinics
- Research Institutes and Universities
- Units of General Hospitals.
- Diagnostic units etc.



* Including Comprehensive Cancer Care Networks according to CraNE WP 6 (CCCN)

Research themes and the patient pathway

Citizens

- Screening
- Early detection

The patient pathway

- Diagnosis (pathology, radiology and molecular diagnostics)
- Surgery
- Radiotherapy
- Systemic therapies
- Patient-centred Care

Underpinning infrastructures

Human resources and education
Clinical registries and Real World Data
Population registries
Structures which ensure care continuity and equality of access

Research and Innovation
themes for capacity building

Discovery and translational
research

Clinical Research

Digital innovation

Outcomes research

I
n
t
e
r
a
c
t
i
o
n

What is Capacity Building (CB)?



Dimensions of Capacity Building

More than training....

Individual

- Needs assessment
- Training
- Extending knowledge and competencies
- Processes for talent development and exchange

Institutional

- Needs assessment
- Gap analysis and identifying barriers
- Sharing excellent practices
- Building resources (data) and teams
- Changing corporate mindsets

Systemic

- Needs assessment
- Breaking down silos
- Bringing in outside expertise (twinning and teaming)
- Networking, governance and organisation
- Redesign of the system and sustainability



Capacity building contents in the call



Objectives

CCI4EU's main objective is to improve or develop existing or future Comprehensive Cancer Infrastructures (CCIs). This will be achieved within 3 years, through the following specific objectives:

- 01. To finalise the model, to be implemented
 - 02. To map the current cancer research and innovation landscape
 - 03. To plan the cluster future development (with national authorities)
 - 04. To identify intervention areas and develop training/capacity building activities
 - 05. To execute the activities and ensure access to the recommendations
 - 06. To disseminate the project results to professional and lay audiences (including caregivers)
- 5 basic phases**
- Develop the theoretical model
 - Map the maturity level of each MS/CCI
 - Prepare customised interventions (CBP)
 - Implement tailored interventions:
 - 9 “Deep Dives”
 - 3 regional conferences with up to 100 ‘team’ delegates from CCIs in each
 - Online lectures on key CCC/CCI subjects, through the ESO platform.
 - Evaluate and disseminate the CCI lessons learned and best practices, to further exploit the CCI beyond the project.

Focussing on developing their research & innovation-related capacities.



Maturity Model



Themes:		Criteria/Subthemes <i>Examples what should be covered by the criteria:</i>
1	CCI structure	<ul style="list-style-type: none"> • • Human resources and education • Structures which ensure care continuity and equality of access • Patient involvement • Interface/Support to/of theme 2-7



Maturity Model

		Level 0	Level 1	Level 2	Level 3 (more level?)
Theme 1: Structure of the CCI Network (5 criteria + 1 criterion Interface)					
Criteria (Qualitative)	<i>Criterion 1.1: Members of the CCI</i> - Minimum Members of a CCI are: - Cooperation between the members..... - Steering committee -	<i>Regional Members of the CCI are not identified</i>	<i>Regional Members of the CCI are identified</i>	<ul style="list-style-type: none"> • Regional Members of the CCI are identified • Written cooperation agreements between the Members of the CCI 	<ul style="list-style-type: none"> • Regional Members of the CCI are identified • Written cooperation agreements between the Members of the CCI • Steering committee is nominated and first meeting took place
	<i>Criterion 1.2:</i>				
	<i>Criterion 1.x:</i>				
	<i>Criterion 1.6 Interface/support to/of Theme 2-7</i>				
Quality indicator (QI) (Quantitative)	Numerator/Denominator/Target:				

Example of CCI tailored interventions in a CCI Deep Dive



		Themes where the maturity model has indicated the need for intervention							
THEME (examples)	CCI structure	Screening	Translational research	Clinical Trials	Integration of research and care	Patient empowerment	Diagnostics	Treatment	Patient-centred care
CCI 1	✓	✓	✓	✓	✓	✓		✓	
CCI 2	✓		✓		✓		✓	✓	✓
CCI 3	✓				✓	✓			



IMPACT of CCI4EU



- Enhanced involvement in quality of scientific research, including development and participation to clinical trials and epidemiological studies and clinical trials
- Better integration between research and care programmes;
- Improvement of patients care pathways and integrated care;
- Development and use of indicators (e.g. quality, outcomes) and registries;
- Implementaton of quality assurance and related standards;
- Support in accreditation and certification;
- Networking capacities (within and across Member States), including through improvement of data exchange capacities (e.g. interoperability and data protection related aspects);
- Gender-related aspects (with respect to representation in research and career pathways and any other relevant aspects);
- Information on available EU (funding) instruments.

Focussing on developing their research & innovation-related capacities.



Thank you for your attention

